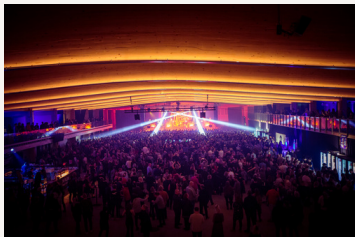


VENUE INFO

AINO ARENA





ROADMAP TO AINO ARENA



GENERAL MAP - TOP VIEW



INFO

ADDRESS: Maamiehenkatu 14, 04400 Järvenpää
CONTACT: info@ainoareena.fi

CAPACITY: Scalable, max. 3200 pax
STAGE: 10 x 14 m
Performance area 7 x 14 m
Changing area behind the backdrop 3 x 14 m
Height 1,20 m

PARKING: Limited parking space
Traffic control is done by our security partner (Narikka.com)

TRUCK PARK: Yes, without electricity

**ACCESS
&
LOAD-IN** The service door is located on the side of the Arena (see map)
From the door you can go directly to stage right, with a truck it
is possible to reverse the lift directly to the stage.
Door size 3.80 m x 5.00 m
NOTE! It is not possible to use this door during a sound check
or concert due to the noise nuisance. Load in / load out from
the back door in between.

There are stairs to the backstage from the back door, which are
located directly behind the stage.

The door works with an event-specific code.

NOTE! When a sound check or a concert is in progress, load in
/ load out takes place through this door.

Door size 1.06 m x 2.12 m

INFO

TRASH:

In terms of cleaning and waste management, our partner is Lassila & Tikanoja.

Please sort your waste and garbage correctly. If your event produces bio-waste, containers must be ordered separately from Lassila & Tikanoja. Please notify the need well before the event.

The Arena has the following waste sorting containers:
mixed waste, cardboard, glass, metal, bio-waste

SECURITY:

Our security partner is Narikka.com

Prices in attached file.

Cloak room services available through security partner.

RIGGING:

The building's roof supports, curved glulam beams, are located every 6 m. When dimensioning the beams, the suspension load $6 \times 0.15 \text{ kN/m}^2 = 0.9 \text{ kN/m}$, i.e. 90 kg per meter of beam length, is taken into account. Everything over these limits must be discussed in advance.

TRUSS:

Three motorized truss lines and one front light line are fixed on top of the platform.

The total load of one truss is max 500 kg (4 points per bar)

All rigging requests must be discussed in advance.

PYROS:

Forbidden. Haze and Co2 can be used

WIFI:

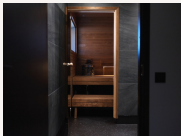
AinoAreenaVieras

Password: Areena2021

INFO

- BACKSTAGE:** Four backstage areas (see p. 4)
- CATERING:** You are free to bring your own catering partner to Aino Arena. Aino Arena is always responsible for serving beverages in the venue.
Restaurant Herkkupaja Aino Arena operates in the venue.
- MERCHANDISE:** Venue provides space, electricity, lighting and tables for merchandise.
Venue doesn't charge or take any percentage from merch sales.

BACKSTAGES



Backstage 1: 10 pax

Backstage 2: 15 pax

Backstage 3: 25 pax

Backstage 4: 5 pax

Backstages 1 & 2 have a balcony.

Backstage 2 has a sauna.

SCREENS



SCREENS:

- 5 screens on floor 1 (55")
- 2 screens on floor 2 (75")
- 3 screens on VIP-boxes (75")
- 5 moveable screens (75")
- 4 moveable screens (55")

SCREEN MATERIALS:

- 1920 x 1020
- max 512 mt
- video or picture
- Screens are controlled via UptoManager

SOUND

MAIN PA:	L/R 12 x Martin Audio WPS 3-Way Line Array (single box resolution) 20 x Martin Audio SXC118 Cardioid Subwoofer Array 8 x Martin Audio Blackline X8 Front Fill 9 x Martin Audio iK42 Amplifier Yamaha MRX-7D processing
LOUNGE & VIP-BOXES	Sonance Professional Series Speakers LEA Amplification
ELECTRICITY	FOH 3 x 16A Stage Left 3 x 16A
SPL-LIMITS	95dB LAeq 5min 107dB LCeq 5min



LIGHTS

DMX patch - Output A 1

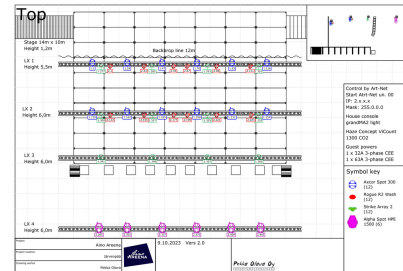
DMX	LD	FIXTURES	MODE	CH	DIP	DISPLAY	COLOR	LOCATION
1	101	Clay Paky Axcor 300 Spot		23				truss 1
24	102	Clay Paky Axcor 300 Spot		23				truss 1
47	103	Clay Paky Axcor 300 Spot		23				truss 1
70	104	Clay Paky Axcor 300 Spot		23				truss 1
93	105	Clay Paky Axcor 300 Spot		23				truss 1
116	106	Clay Paky Axcor 300 Spot		23				truss 1
139	107	Clay Paky Axcor 300 Spot		23				truss 2
162	108	Clay Paky Axcor 300 Spot		23				truss 2
185	109	Clay Paky Axcor 300 Spot		23				truss 2
208	110	Clay Paky Axcor 300 Spot		23				truss 2
231	111	Clay Paky Axcor 300 Spot		23				truss 2
254	112	Clay Paky Axcor 300 Spot		23				truss 2
277	301	Chauvet STRIKE Array 2		8				truss 1
285	302	Chauvet STRIKE Array 2		8				truss 1
293	303	Chauvet STRIKE Array 2		8				truss 1
301	304	Chauvet STRIKE Array 2		8				truss 1
309	305	Chauvet STRIKE Array 2		8				truss 2
317	306	Chauvet STRIKE Array 2		8				truss 2
325	307	Chauvet STRIKE Array 2		8				truss 2
333	308	Chauvet STRIKE Array 2		8				truss 2
341	309	Chauvet STRIKE Array 2		8				truss 3
349	310	Chauvet STRIKE Array 2		8				truss 3
357	311	Chauvet STRIKE Array 2		8				truss 3
365	312	Chauvet STRIKE Array 2		8				truss 3
501	1000	Concept ViCount Haze co2		1				floor

LIGHTS

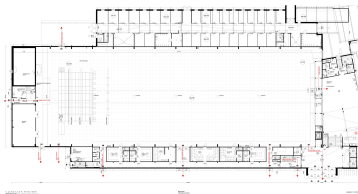
DMX	LD	FIXTURES	MODE	CH	DIP	DISPLAY	COLOR	LOCATION
1	201	Chauvet Rogue R2 Wash	22	23				truss 1
23	202	Chauvet Rogue R2 Wash	22	23				truss 1
45	203	Chauvet Rogue R2 Wash	22	23				truss 1
67	204	Chauvet Rogue R2 Wash	22	23				truss 1
89	205	Chauvet Rogue R2 Wash	22	23				truss 1
111	206	Chauvet Rogue R2 Wash	22	23				truss 1
133	207	Chauvet Rogue R2 Wash	22	23				truss 2
155	208	Chauvet Rogue R2 Wash	22	23				truss 2
177	209	Chauvet Rogue R2 Wash	22	23				truss 2
199	210	Chauvet Rogue R2 Wash	22	23				truss 2
221	211	Chauvet Rogue R2 Wash	22	23				truss 2
243	212	Chauvet Rogue R2 Wash	22	23				truss 2
265	501	Clay Paky ALPHA SPOT HPE	STD	36				front truss
301	502	Clay Paky ALPHA SPOT HPE	STD	36				front truss
337	503	Clay Paky ALPHA SPOT HPE	STD	36				front truss
373	504	Clay Paky ALPHA SPOT HPE	STD	36				front truss
409	505	Clay Paky ALPHA SPOT HPE	STD	36				front truss
445	506	Clay Paky ALPHA SPOT HPE	STD	36				front truss
481								

Arena

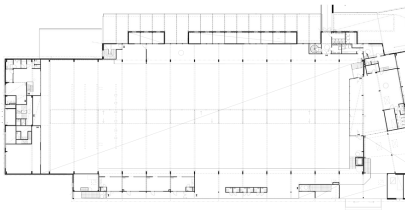
Lighting design



FLOORPLAN



1. level



2. level

